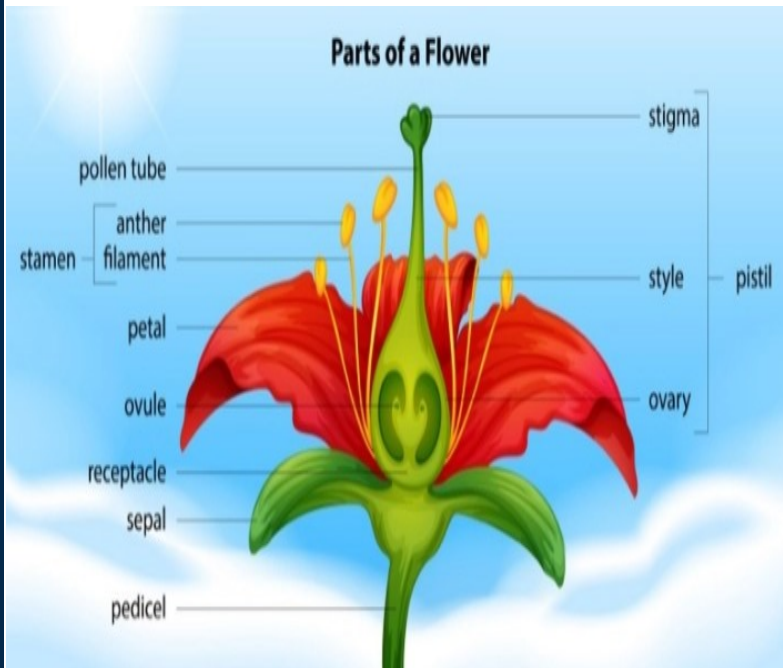


## Vocabulary

Word	Definition
<b>Absorption</b>	The process by which plants take-up substances from the soil.
<b>Xylem</b>	Plant tissue that transfers water and nutrients from the roots to all other parts of the plant.
<b>Phloem</b>	Plant tissue that transfers foods made in the leaves to all other parts of the plant.
<b>Pollination</b>	The act of transferring pollen grains from the male anther of a flower to the female stigma.
<b>Dispersal</b>	The movement, spread or transport of seeds away from the parent plant.
<b>Reproduce</b>	The production of new offspring in plants.
<b>Nutrients</b>	The chemical elements that a plant needs to grow in a healthy way.
<b>Variables</b>	Any factor that can be controlled, changed, or measured in an experiment.
<b>Dissect</b>	to cut apart the body of a plant in order to study its structure.

## In KS1, you had the opportunity to:

- identify and name a variety of common wild and garden plants
- observe and describe how seeds and bulbs grow into mature plants



## Key Facts

- Plants absorb water from the soil, through the roots, up the stem.
- A plant consists of roots, stem, trunk, leaves and flowers.
- A plant needs air, light, water, nutrients from the soil and sufficient space in order to live.
- The xylem absorbs sugar.
- The phloem absorbs water.
- Different parts of plants have different functions
- Plants need to pollinate in order to reproduce.
- Plants are pollinated through seed dispersal by humans, animals, wind, water.

## Working Scientifically

- Dissecting plants to identify the main parts.
- Observing how plants transport water.
- Observing and explaining how light, water, nutrients and air affect plant growth.
- Describing the functions of different parts of a plant..
- Explaining how plants pollinate through seed dispersal by humans, animals, wind, water.
- Making careful and accurate measurements using rulers
- Drawing conclusions based on evidence.
- Making predictions based on an understanding of the variables.
- Planning a fair test.
- Recording results using tables and diagrams